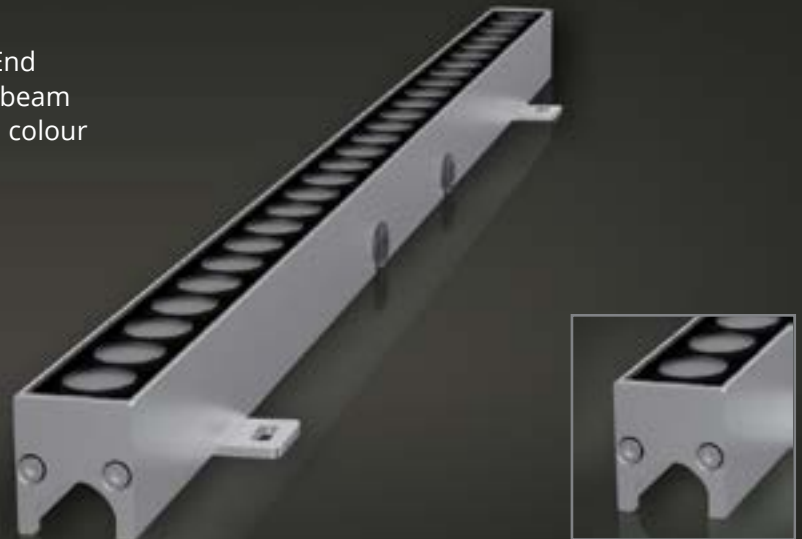


# LINEAR SLIM PL DC

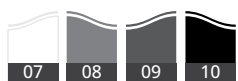
A low height profile for limited space, End to End connection makes installation easier, Various beam angles are available, Choose from customized colour temperatures.



## SPECIFICATION

<b>MODEL</b>	HIGH WAVE LINEAR SLIM PL DC
<b>OPERATING VOLTAGE</b>	24V DC
<b>POWER CONSUMPTION</b>	4W/305mm, 14W/1220mm
<b>LED TYPE</b>	SMD, High Power LED
<b>COLOUR TEMP OPTION</b>	2700K, 3000K, 4000K, 5000K, Tunable White, RGB, RGBW
<b>CRI</b>	90min, 80min
<b>PRODUCT EFFICIENCY</b>	61lm/W@3000K
<b>FULL WIDTH AT HALF MAXIMUM (OPTICS)</b>	10°*40°, 20°*40°, 40°
<b>MATERIAL</b>	Aluminum + Tempered Glass
<b>AMBIENT OPERATING TEMPERATURE</b>	-20°C ~ +55°C
<b>LUMEN MAINTENANCE</b>	50,000 hours/L70 at 25°C
<b>DIMENSIONS</b>	1220(L)*25(W)*31(H)mm(Flat Bracket) 1220(L)*25(W)*49(H)mm(Adjustable Bracket) 305/610/915/1000mm available
<b>CABLE LENGTH</b>	300mm
<b>CONTROL SYSTEM</b>	ON/OFF, DMX/RDM, 0-10V Dim
<b>MOUNTING TYPE</b>	Surface
<b>IP RATING</b>	IP66

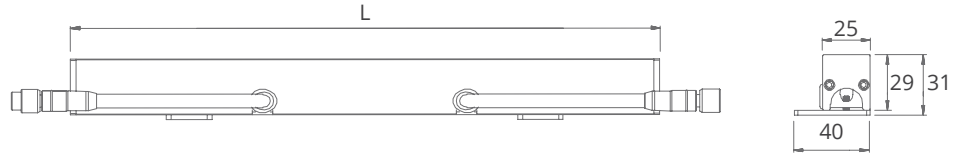
## FEATURES & OPTIONS



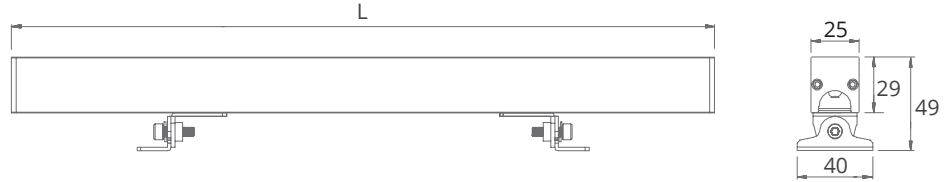
- |                |                   |
|----------------|-------------------|
| 01. CW         | 10. RAL9005       |
| 02. NW         | 11. IP66          |
| 03. WW         | 12. ANTI-SALINE   |
| 04. DW         | 13. POLAR         |
| 05. RGB        | 14. DMX           |
| 06. RGBW       | 15. RFU           |
| 07. RAL9003    | 16. RDM           |
| 08. GRMEN GREY | 17. DALI          |
| 09. RAL7016    | 18. WIRELESS DATA |

**DIMENSIONS**

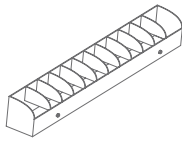
Flat Bracket



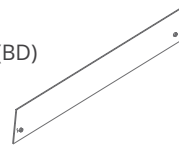
Adjustable Bracket



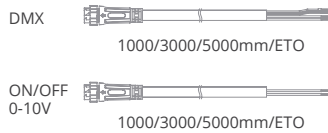
Louver



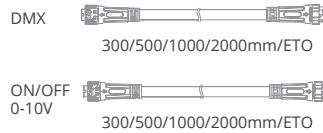
Barn Door(BD)



Leader Cable



Jumper Cable



\*all units are in mm

**OPTIC SELECTION**



**20°x40°**

LED	Lumens	Watts	Efficacy
WHITE	843.84	14.40	58.60

CenterBeamLux	Illuminance at Distance
469.71 lx	01.7 m
117.13 lx	03.3 m
52.06 lx	05.0 m
29.28 lx	06.7 m
18.74 lx	08.3 m
12.88 lx	10.0 m

■ Ver. Spread: 22.7° ■ Horiz. Spread: 40.7°

**3000K**



**40°**

LED	Lumens	Watts	Efficacy
WHITE	854.00	14.00	61.00

CenterBeamLux	Illuminance at Distance
407.17 lx	01.7 m
101.49 lx	03.3 m
44.33 lx	05.0 m
25.47 lx	06.7 m
16.31 lx	08.3 m
11.32 lx	10.0 m

■ Ver. Spread: 43.9° ■ Horiz. Spread: 43.7°